

# Auzzie Turf

CLYDE NORTH



## PRODUCT CATALOGUE

[www.auzzieturf.com.au](http://www.auzzieturf.com.au)

# About Us

Welcome to Auzzie Turf, your trusted partner in landscaping excellence! For the past many years, we've been dedicated to providing top-quality landscape products that transform outdoor spaces into breathtaking havens. At Auzzie Turf, with a commitment to quality, sustainability, and customer satisfaction, we strive to exceed expectations in every project we undertake. Join us in creating landscapes that not only enhance aesthetics but also enrich lives. Discover the difference with Auzzie Turf – where innovation meets nature's beauty.



# Artificial Grass



07 Years  
Warranty



Pet And  
Child Friendly



Chemical  
Free



Eco  
Friendly



UV  
Stabilised



## 40mm Premium Lush Green

- ◆ Dtex 11500
- ◆ Density 21000 Stitch / Sqm
- ◆ Available width 2m, 3m, 3.6m, 4m



## 40mm Natural Green

- ◆ Dtex 11500
- ◆ Density 21000 Stitch / Sqm
- ◆ Available width 2m, 3m, 3.6m, 4m



## 35mm Classic Green

- ◆ Dtex 10000
- ◆ Density 18,500 Stitch / Sqm
- ◆ Available width 2m, 3m, 4m



## 45mm Premium Forest Green

- ◆ Dtex 13000
- ◆ Density 23000 Stitch / Sqm
- ◆ Available width 2m, 4m



## 15mm Sports Grass

- ◆ Dtex 9000
- ◆ Density 63000 Stitch / Sqm
- ◆ Available width 2m, 4m

# WPC Decking (Co-extruded)

WPC decking size: 140mm – 25mm – 5.4m

Facia size: 138mm – 10mm – 4.8m



Maintenance free



100% UV protected



Mould protected



Hidden screw technology



3D deep wood grain embossed surface



07 to 10 Years warranty



Walnut



Ebony



Grey



Teak



Redwood



Coffee



# WPC Decking (3D)

**WPC decking size:** 150mm – 23mm – 5.4m

**Facia size:** 140mm – 22.5mm – 5.4m



Maintenance free



100% UV protected



Mould protected



Hidden screw technology



3D deep wood grain embossed surface



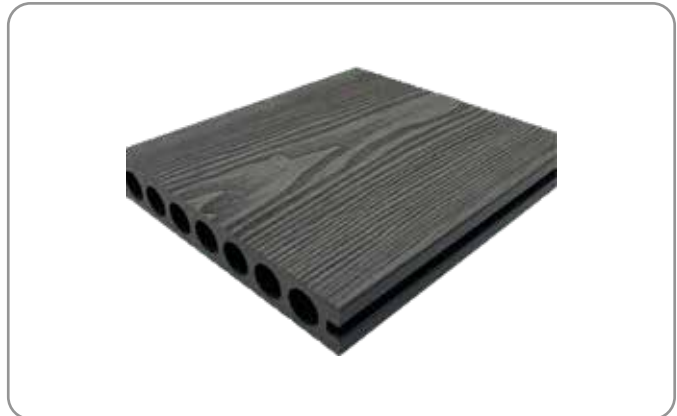
Easy to install



**Redwood**



**3D Teak**



**Ebony**

# WPC Cladding (Indoor)

WPC cladding size: 219 – 26 – 2900



Weather  
resistance



Easy  
installation



No  
Maintenance



High  
Durability



UV  
resistance



Eco  
friendly



# Stacked Stone Cladding

## Common Applications:

1

Interior walls

2

Fireplaces

3

Water features

4

Columns

5

Exterior walls

6

Corner pieces



Smokey



Ebony black



Crystle White



Rustic



# Bamboo Panels

## Types of Bamboo panels:

**1** 1.8m height  
1m width

**2** 2m height  
1m width

**3** 2.4m height  
1m width

## Bamboo capping: Size 1m and 2m





# Garden Pebbles

## Types of Garden Pebbles:

1

**White Pebbles:**  
Polished & Tumble

2

**Black Pebbles:**  
Polished

3

**Glow Pebbles:**  
Sky Blue, Green &  
Dark Blue

4

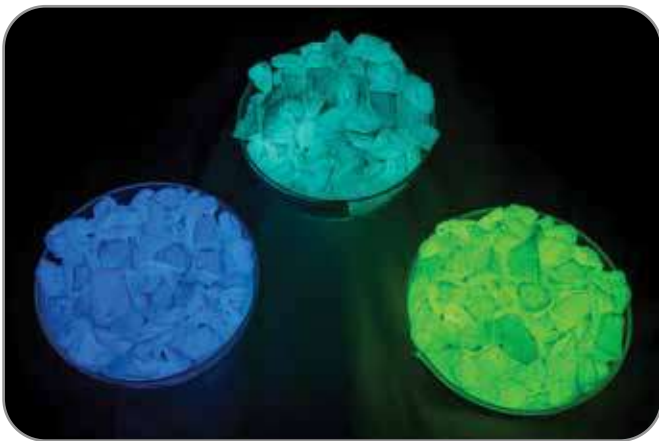
**Mix polished Pebbles**



**White Pebbles**



**Black Pebbles**



**Glow Pebbles**



**Mix polished Pebbles**

# Letter Box



**Azzie 6009**



**Azzie 6019**



**Azzie 6025**



**Azzie 8004**



**Azzie 5021**



**Azzie 5018**



**Azzie 4454**

# Artificial Hedge



Pet and Child friendly



Chemical free



Eco friendly



UV stabilised

## Types of Artificial Hedge:



Expandable Hedge  
1.8m \* 1m



Fixed Square Hedge  
50cm \* 50cm



Fixed Square Hedge  
1m \* 1m



# Bulk Bags

## Application of Bulk bags:



Builder Bags



Pallet Bags



UN Bags



Firewood Bags



Garden Bags



Sand Bags



Pallet Bags



Skip Bin Bags



Concrete Bags



Agriculture Bags



Industrial Bags



1 Ton Bags

## Bag types:

- ✦ Single & Double Loop
- ✦ X Corner
- ✦ Tunnel
- ✦ Q-Baffled
- ✦ Ventilated
- ✦ Anti-Static
- ✦ Conductive

# Accessories

## Nails



Straight Nails



U Nails

## Joint Tape



Dry Wash Sand



## Weed Mate






Pallet Wrap




*Thank you*




**Brisbane**

-  3/1185 Beaudesert Road  
Acacia Ridge, QLD- 4110
-  0430 712 090
-  [sanjay@auzziigroup.com](mailto:sanjay@auzziigroup.com)

**Melbourne- Truganina**

-  6/5 Connect Road  
Truganina VIC – 3029
-  0451 924 454
-  [info@auzziigroup.com](mailto:info@auzziigroup.com)

**Melbourne- Clyde North**

-  38 Palladium Cct  
Clyde North, VIC 3978
-  0430 724 909
-  [clyde@auzziigroup.com](mailto:clyde@auzziigroup.com)